

*The piston will only become visible after administering several doses..

Warning



Do not remove insulin from the pen with a syringe. If you do, you will get too much insulin.



Storage instructions

- Store your new pens in the refrigerator, between 2°C and 8°C. Do not freeze the pens.
- Your pen can be used for a maximum of 6 weeks after its first use. Store your pen at room temperature, below 30°C and away from direct heat or direct light. Never put your pen back in the refrigerator.
- Do not store your pen with a needle attached. Keep it with its cap securely in place. Never use your pen after the expiration date.

[Click here for further instructions and detailed Product Information](#)

MAT-BE-2500694 v1.0 06/2025



TOUJEO® SOLOSTAR® Technical instructions

For more information, please consult the complete instructions/package insert found in your Solostar® box



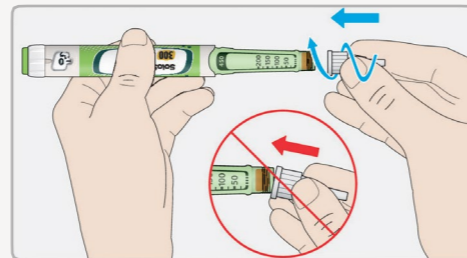
Toujeo®
insulin glargine 300U/mL

1 Check your pen

- Check the label on the pen to ensure you have the correct insulin.
- Remove a new pen from the refrigerator at least 1 hour before injection. Injecting cold insulin is more painful.
- Check that the insulin is clear and transparent. Do not use the pen if the contents appear cloudy or colored.

2 Attach a new needle

Always use a new sterile needle for each injection. This measure helps prevent any risk of contamination, infection, or possible needle blockage.



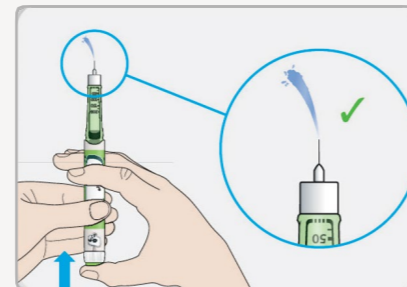
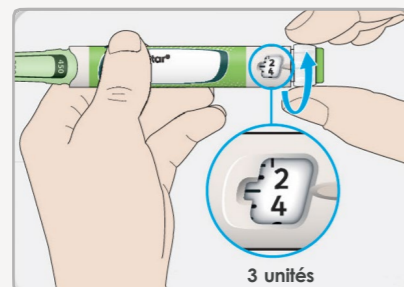
- Remove the needle's protective seal.
- Attach the needle directly to the pen.

3 Perform a safety test

Always perform a safety test before each injection - this is to allow:

- to verify that your pen and needle are working correctly
- to ensure that the correct dose is delivered

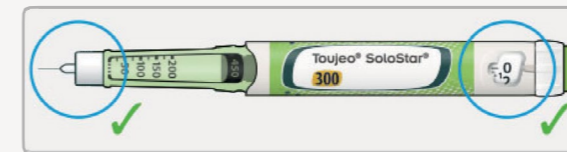
- Select 3 units by turning the dose selector until the dose pointer is at the line between 2 and 4.
- Hold the pen with the needle pointing upward and press the injection button all the way in. If insulin comes out of the needle tip, it means your pen is working correctly. If not, repeat the safety test up to 3 times until you see insulin coming out of the needle. If insulin still doesn't come out after the 3rd attempt, change the needle.



4 Select the dose

Never select a dose or press the injection button without a needle attached to the pen. This could damage your pen.

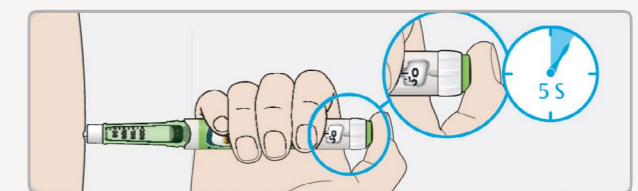
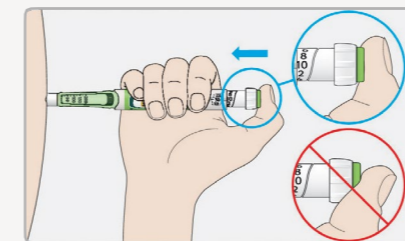
- Make sure a needle is properly attached to the pen and that the dose is set to "0".
- Turn the dose selector until the dose pointer is aligned with your desired dose. Your pen contains a total of 450 units. You can select doses from 1 to 80 units, in one-unit increments.



5 Inject your dose

If you have difficulty pushing the injection button, do not force it as this could break your pen.

- Follow the injection method shown/instructed by your doctor or nurse.
- Place your thumb on the injection button. Then press the button all the way down and hold it down. When you see "0" in the dose display window, count slowly to 5.
- Release the injection button and then remove the needle from your skin.



6 Remove the needle

- Put the outer needle cap back on the needle and use it to unscrew the needle from the pen.
- Dispose of the used needle in a specific container.
- Put the pen cap back on.

