

INSTRUCTIONS FOR USE: TOUJEO® SoloSTAR® and DoubleSTAR®

Read this first

This is a summary only. For complete injection instructions, and for important safety information about TOUJEO®, please refer to the Patient Medication Information. Carefully follow the directions supplied by your healthcare provider on the correct use of your TOUJEO® pen.

Do not share your TOUJEO® SoloSTAR® or DoubleSTAR® pen with other people, even if the needle has been changed.

TOUJEO® contains 300 U/mL insulin glargine.

- X Do not** re-use needles
- X Do not** use a syringe to remove insulin from your pen
 - The dose selector of the TOUJEO® DoubleSTAR® pen dials by 2 units. This pen is recommended for patients requiring at least 20 units per day

People who are blind or have vision problems should not use the TOUJEO® SoloSTAR® or DoubleSTAR® pen without help from a person trained to use it.

Important information

Do not use your pen if it is damaged or if you are not sure that it is working properly.

- X** The injection pen is for single-patient use
- ✓** Always perform a safety test (see **Step 3**)
- ✓** Ask for help if you have problems handling the pen
- ✓** Always carry a spare pen and spare needles

Learn to inject

- Before using your pen, talk with your healthcare provider about how to inject
- Read all the instructions

Need help?

If you have any questions about your pen or about diabetes, ask your healthcare provider, or call sanofi-aventis Canada Inc. at **1-888-852-6887**.

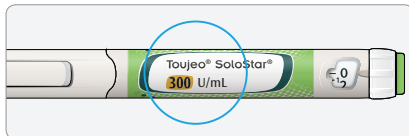
Extra items you will need:

- A new sterile needle (not included with the pen) (see **Step 2**)
- An alcohol swab
- A puncture-resistant container for used needles and pens

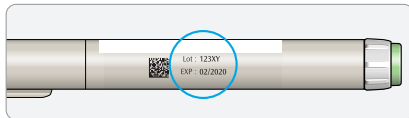
STEP 1: Check your pen

Take a new pen out of the refrigerator at least **1** hour before you inject. Make sure insulin is at room temperature.

- A** Check the name and expiration date.
- Make sure you have the correct insulin



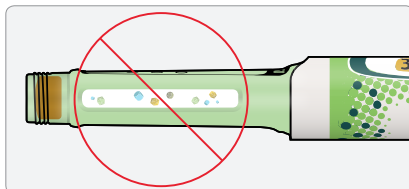
- **Do not** use your pen after the expiration date



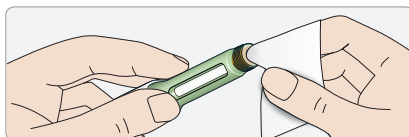
- B** Pull off the pen cap.



- C** Check that the insulin is clear.



- D** Wipe the rubber seal with an alcohol swab.

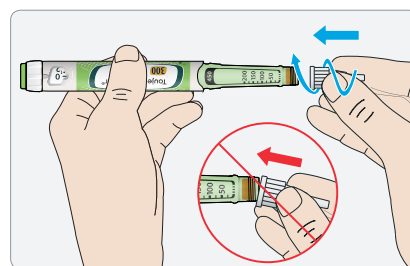


STEP 2: Attach a new needle

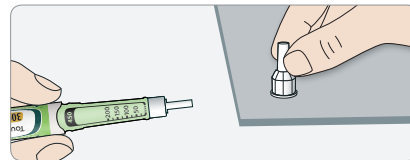
- A** Peel off the protective seal from a new needle.



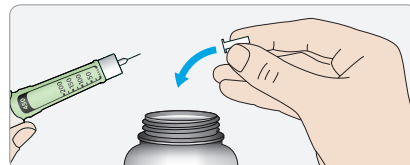
- B** Keep the needle straight and screw it onto the pen.



- C** Pull off the outer needle cap. Keep this for later.

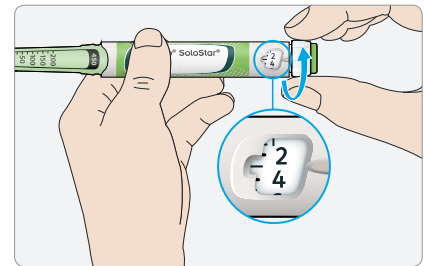


- D** Pull off the inner needle cap and throw away.

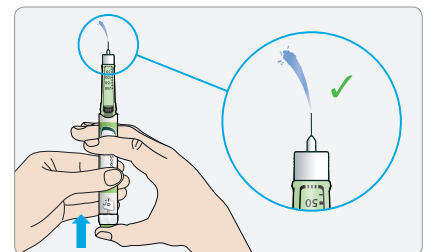


STEP 3: Do a safety test

- A** SoloSTAR®: Select 3 UNITS by turning the dose selector until the pointer is between 2 and 4.
DoubleSTAR®: Select 4 UNITS by turning the dose selector until the pointer is at the 4 mark.



- B** Press the injection button.
- When insulin comes out of the needle, your pen is working correctly



If no insulin appears:

- Repeat this step up to **3** times for SoloSTAR®, **6** times for DoubleSTAR®
- If no insulin comes out after this:
 - Change the needle (see **Step 6** and **Step 2**)
 - Repeat the safety test (**Step 3**)
- If there is still no insulin coming out: use a new pen

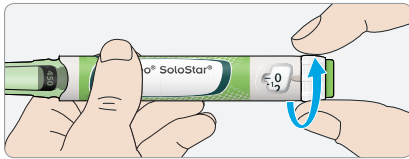
STEP 4: Select your dose

- A** Make sure a needle is attached and the dose is set to "0".



- B** Turn the dose selector until the pointer lines up with your dose.

- If you turn past your dose, you can turn back down
- The dose selector will stop at the number of units left
- If you cannot select your full prescribed dose, split the dose into 2 injections or use a new pen



- C** How to read the dose window

SoloSTAR:

Even numbers: in line with the dose pointer:



30 units selected

Odd numbers: line between even numbers:



29 units selected

DoubleSTAR:



60 units selected

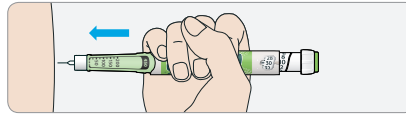


58 units selected

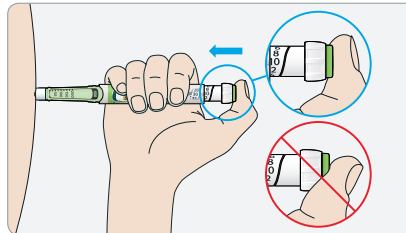
STEP 5: Inject your dose

- A** Choose a clean and dry place to inject as shown in the picture labelled "Possible Injection Sites" below.

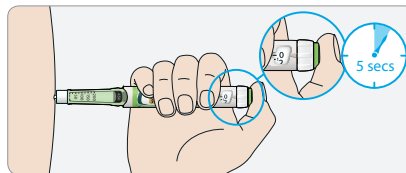
- B** Push the needle into your skin.



- C** Place your thumb on the injection button. Then press all the way in and hold. If you find it hard to press the injection button in, do not force it as this may break your pen.



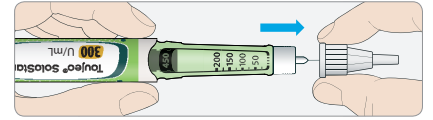
- D** Hold injection button and when you see "0" in the dose window, slowly count to 5.



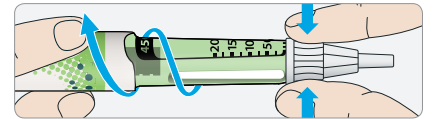
- E** After counting to 5, release the button. Remove the needle.

STEP 6: Remove the needle

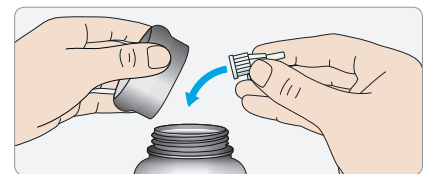
- A** **Do not** put the inner needle cap back on. Grip the widest part of the outer needle cap. Keep the needle straight and guide it into the outer needle cap. Then push firmly on.



- B** Grip and squeeze the widest part of the outer needle cap. Turn your pen several times with your other hand to remove the needle.

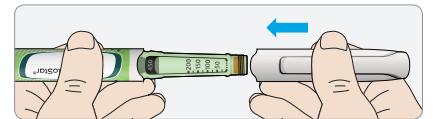


- C** Throw away the used needle in a puncture-resistant container.



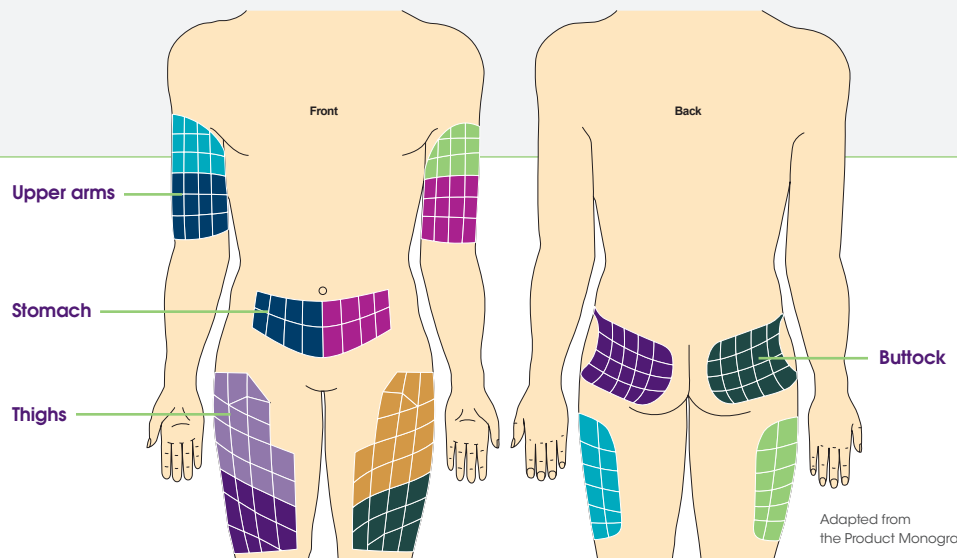
- D** Put the pen cap back on.

- **Do not** put the pen back in the refrigerator



Only use your pen for up to 42 days after its first use.

Possible Injection Sites



Adapted from the Product Monograph.

- Inject your insulin exactly as your healthcare provider has shown you
- Change (rotate) your injection sites within the area you choose for each dose
- Do not inject where the skin is tender, bruised, scaly or hard, or into scars or damaged skin

Distributed by:
sanofi-aventis Canada Inc.
2905 Place Louis-R.-Renaud
Laval, Québec, Canada
H7V 0A3

Copyright © 2022 sanofi-aventis Canada Inc.
All rights reserved.
MAT-CA-2000718 07/22

sanofi

MEMBER OF
INNOVATIVE MEDICINES CANADA



Toujeo
insulin glargine 300 U/mL